

07-18 JEEP WRANGLER JK 10th Anniversary Skid Plate



CAUTION BEFORE INSTALLING

Before installation - Read and understand all instructions, warnings, cautions, and notes contained in this installation instruction guide. Consult your vehicle owner's manual for proper disconnection of electrical and lifting of vehicle if required for installation of this product.

This install may require some technical skills and knowledge of basic mechanical work. If you do not feel that you are capable of performing this install please take this product to a trained professional.

After reading this guide please contact us with any questions or concerns before installing product.
E-mail: tech@calliert4x4.com

CALLIERT is not responsible for any bodily injury or harm to you or your vehicle as a result of an improper install.

Proper installation of this kit requires knowledge of the factory recommended procedures for removal and installation of original equipment components. We recommend that the factory shop manual and any special tools needed to service your vehicle be on hand during the installation. Installation of this kit without proper knowledge of the factory recommended procedures may affect the performance of these components and the safety of the vehicle.

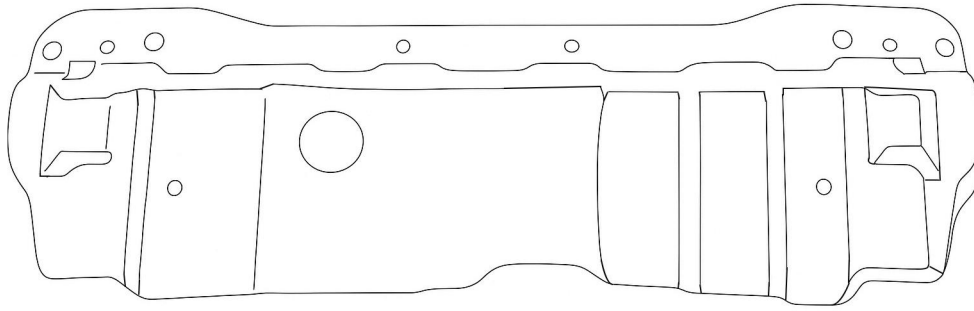
- **Always wear eye protection when operating power tools.** •

Inspect all contents of this package to make sure product is not damaged and all installation hardware has been included. If parts are missing from kit, please be prepared to provide the following information:

- Name of purchase location
- Bar Code on side of box

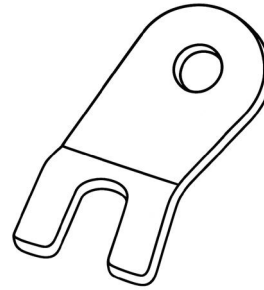
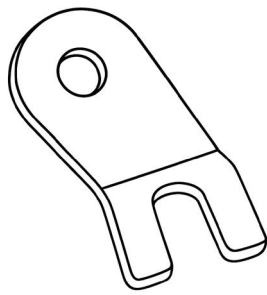
INSTALLATION MANUAL

①.



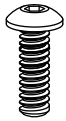
Skid Plate

②.



Bracket

a.



x7

M10 x 30mm
Button Head Hex Socket Bolt

d.



x3

M10
U-nut Clip

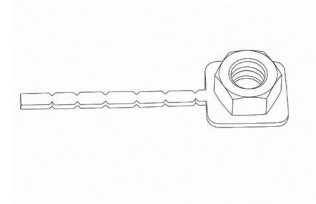
b.



x7

M10 x 20 x 2mm
Washer

e.



x2

M10
95 x 20 x 2mm
Custom Nuts Bracket

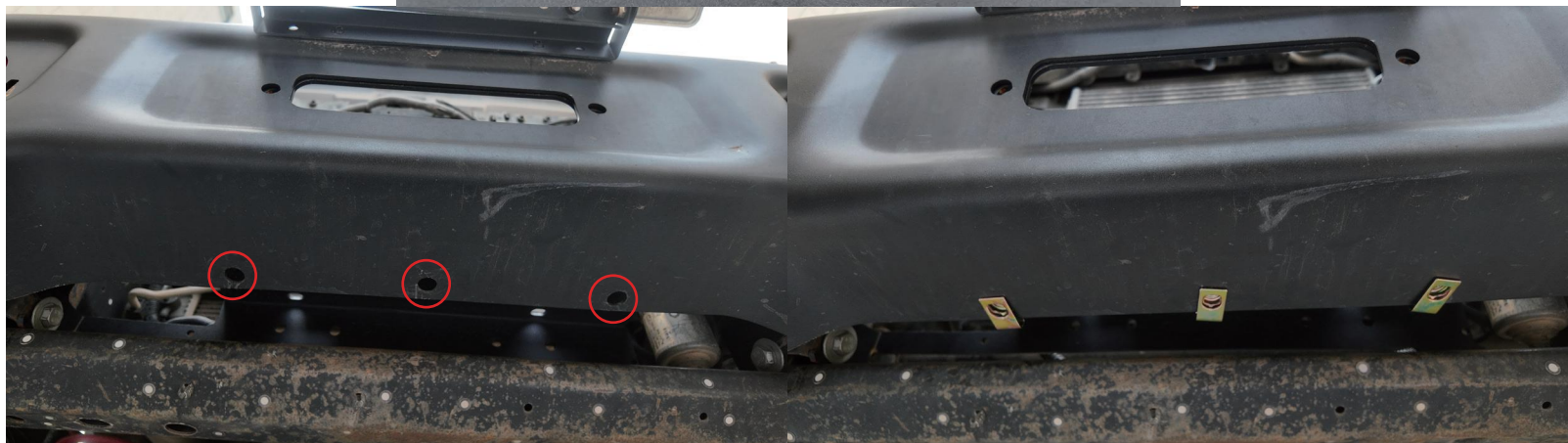
c.



x2

M10
Hex Flange Nut

INSTALLATION MANUAL



Prepare the required parts (d*3).
As shown in the diagram, install d at the red-circled holes.

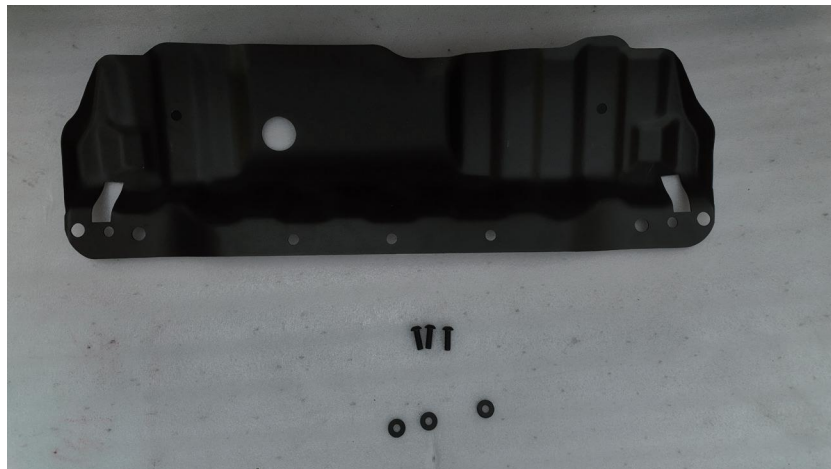
INSTALLATION MANUAL



Prepare the required parts (a*2, b*2, e*2, ②*2).

As shown in the diagram,
secure ② to the frame rails using a, b, and e at the red-circled holes.
(Note: Adjust the state of e manually to align with the holes.)

INSTALLATION MANUAL



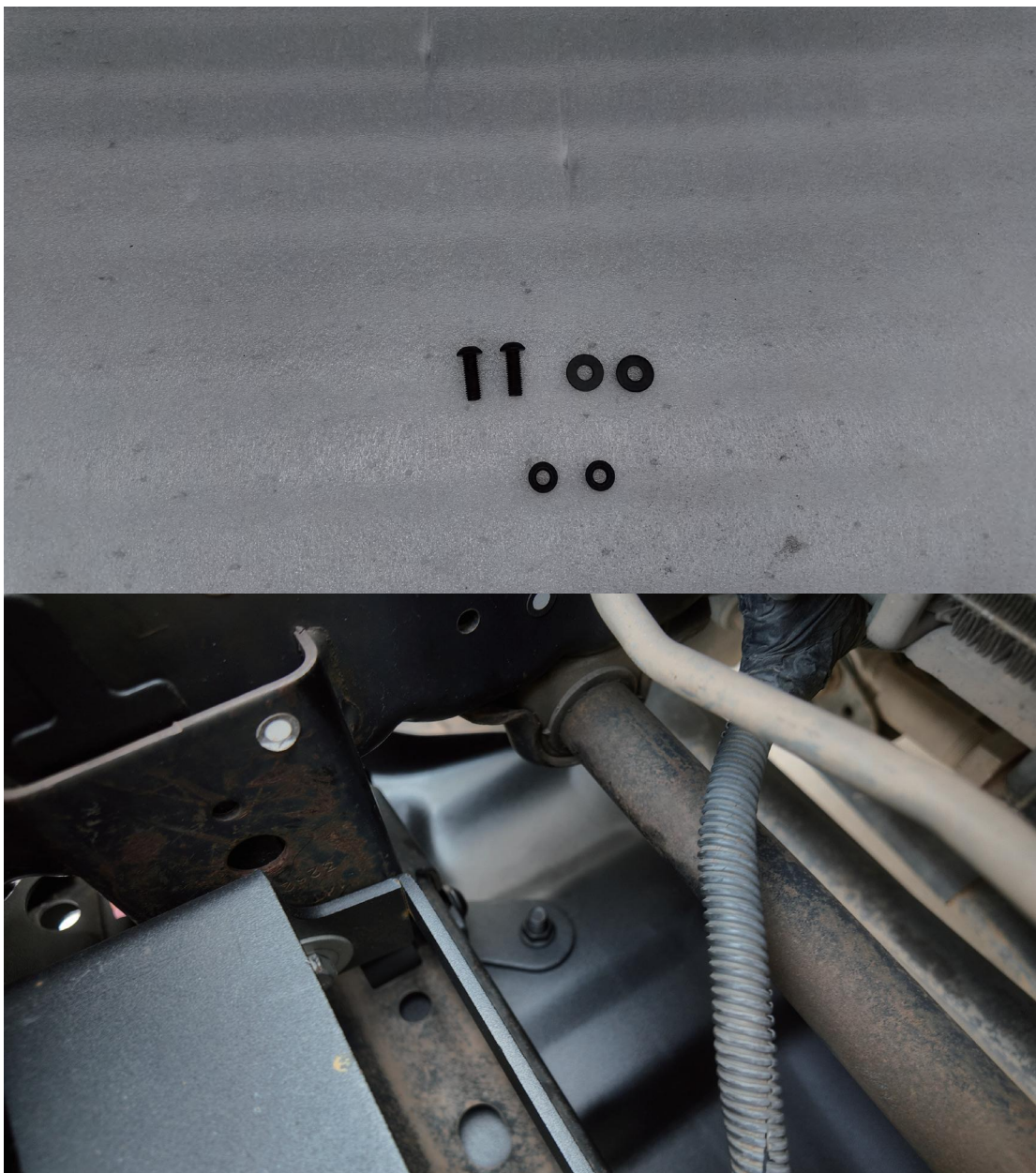
Prepare the required parts (a*3, b*3, ①*1).

As shown in the diagram,
connect ① to the bumper using a and b at the red-circled holes.



CALLIERT

INSTALLATION MANUAL



Prepare the required parts (a*2, b*2, c*2).
As shown in the diagram, connect ① and ② using a, b, and c.

INSTALLATION **MANUAL**



Installation Completed

CALLI[★]ERT